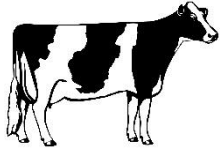




University of Kentucky
College of Agriculture,
Food and Environment
Cooperative Extension Service
Mercer County



Mercer County Fair Dairy Show
Saturday, July 23, 2022
Mercer County Fairgrounds



10:00am – Livestock Pavilion

Registration begins at 8:00am

Total premiums offered: Approximately \$5000

RULES

1. All cattle showing in Open Classes must be registered with registration papers presented when entering, or statement from Breed Office stating that application for registration or transfer has been received by them.
2. The Judge's decision is final on reckoning age in case of dispute.
3. When on exhibit in the ring, owner or employee must be in charge of the animal.
4. All cattle to be exhibited at the Mercer County Fair must, upon entering the grounds, be accompanied by an Official Health Certificate (no statement or other papers accepted) showing that they are free from Brucellosis (Bangs Disease). All animals must be properly identified by ear tag number or legible tattoo. No animals will be allowed to show that are infected with warts, ringworm or other infectious or communicable disease.
5. Premiums will be mailed.
6. All 4-H and FFA classes will be for Mercer County members only.
7. All 4-H and FFA members are eligible to show in Open Class.
8. 4-H and FFA: All animals exhibited must be 4-H or FFA project animals entered in child's name by May 31st of current year.
9. Cattle may be brought on the grounds anytime on Friday prior to the Saturday show.
10. Exhibitor is responsible for own bedding.
11. Any Kentucky exhibitor is eligible for Open Class competition.
12. Dry cows must show in the dry cow class.
13. Dry cows must be three years old or older.
14. There will be a Kiddie Showmanship Class for children 8 years old and younger.
15. Pre-registration will be required using online entry system. Scratches will be allowed day of show.

Link for registration: <http://mercerfairky.fairentry.com/>



Mercer County Fair Dairy Show

Saturday, July 23, 2022

Ayrshire – Jersey – Guernsey – Holstein – Brown Swiss

Classes and Premiums will be the same for each breed.

Total Premium Offered: \$1040 each breed

Class 1	Heifer Junior Calf	\$20 - \$15 - \$10 - \$10 - \$10	\$65
Class 2	Heifer Intermediate Calf	\$20 - \$15 - \$10 - \$10 - \$10	\$65
Class 3	Heifer Senior Calf	\$20 - \$15 - \$10 - \$10 - \$10	\$65
Class 4	Heifer Summer Yearling	\$20 - \$15 - \$10 - \$10 - \$10	\$65
Class 5	Heifer Junior Yearling	\$20 - \$15 - \$10 - \$10 - \$10	\$65
Class 6	Heifer Intermediate Yearling	\$20 - \$15 - \$10 - \$10 - \$10	\$65
Class 7	Heifer Senior Yearling	\$20 - \$15 - \$10 - \$10 - \$10	\$65
	Junior Champion Female	Rosette – Youth & Open	
	Reserve Junior Champion	Rosette – Youth & Open	
Class 8	Dry Cow	\$25 - \$20 - \$15	\$60
Class 9	2 year old cow	\$25 - \$20 - \$15	\$60
Class 10	3 year old cow	\$25 - \$20 - \$15	\$60
Class 11	4 year old cow	\$25 - \$20 - \$15	\$60
Class 12	5 year and older cow	\$25 - \$20 - \$15	\$60
	Senior Champion Female	Rosette – Youth & Open	
	Reserve Senior Champion	Rosette – Youth & Open	
	Grand Champion Female	Rosette – Youth & Open	
Class 13	*Best Udder (a)	\$25	\$25
Class 14	*Best Dairy Herd(b)	\$20 - \$15 - \$10	\$45
Class 15	*Best Three Females (c)	\$20 - \$15 - \$10	\$45
Class 16	*Best Produce of Dam (d)	\$20 - \$15 - \$10	\$45
	Supreme Junior Champion	\$50 – Youth & Open	
	Supreme Senior Champion	\$100 – Youth & Open	
	Supreme Youth Junior Champion	\$50	
	Supreme Youth Senior Champion	\$100	
	Supreme Female	C.H. McRay Memorial Trophy	

* In order to receive premium money for these classes, animals **MUST** enter the ring.

a. Best Udder – Cow in milk any age, judged on udder alone.

b. Best Dairy Herd – Consisting of three females, all of milking age.

c. Best Three Females – Three females bred by the exhibitor and at least one owned by the exhibitor.

d. Best Produce of Dam: Group of females, any age, produced by one cow.